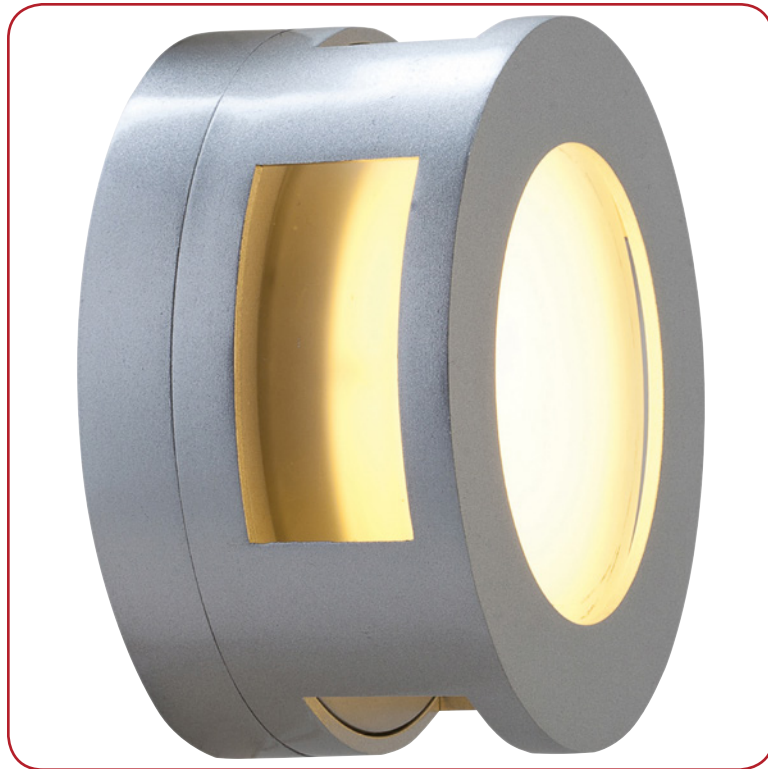


Model No :: **20375LEDMGLP-SAT/FST**
 Name :: Nymph



Project Name :: _____
 Location :: _____
 Type :: _____
 Quantity :: _____
 Notes :: _____

Product Information

Product ID :: 20375
 UPC Code :: 641594200812
 Mounting Type :: Wall
 Finish :: Satin (SAT)
 Diffuser :: Frosted (FST)
 Alt. Finishes :: Bronze (BRZ); Satin (SAT)
 Alt. Diffusers :: Frosted (FST)

Product Dimensions

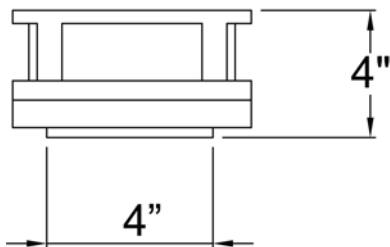
Fixture	Canopy
Length :: N/A	Length :: N/A
Width :: N/A	Width :: N/A
Diameter :: 6.75"	Diameter :: N/A
Extension :: 4"	Height :: 0.5"
Height :: N/A	
Overall Height :: N/A	



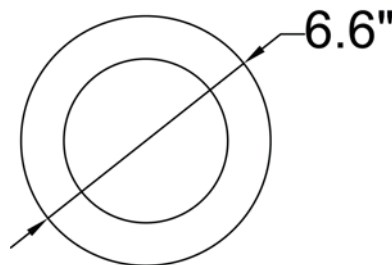
Technical Specifications

Qualifications	Specifications	Photometrics	Recommended Dimmers
Location Rating :: Wet	Frame Material :: Aluminum	CCT :: 3000	0
Certification :: ETL Listed (US/Canada)	Diffuser Material :: Glass	CRI :: 85	
IES File ::	Voltage :: 120v	Wattage :: 10w	
JA8 Compliant :: No	Lamping Type :: Replaceable LED	Nominal Lumens :: 900Lm	
Energy Star :: No	Lamping Base :: GU-24	Delivered Lumens :: N/A	
ADA Compliant :: Yes	Lamp Quantity :: 1	Additional Items :: 0	
Marine Grade :: Yes	Lamp Wattage :: 10 W		
Emergency Lighting :: No	Total Wattage :: 10w		
Warranty :: 3 Year Limited	Lamps Included :: Yes		
	J-Box Type :: Standard		

Line Drawing #1



Line Drawing #2



IES File

Image Not Available

Toll Free 800-828-5483 • www.AccessLighting.com

14410 Myford Road, Irvine, CA 92606

The information provided is subject to change without notice. ©2020 Access Lighting Corporation. All Rights Reserved
 Rev. 202004 Filename:: 20375LEDMGLP-SAT_FST.pdf

