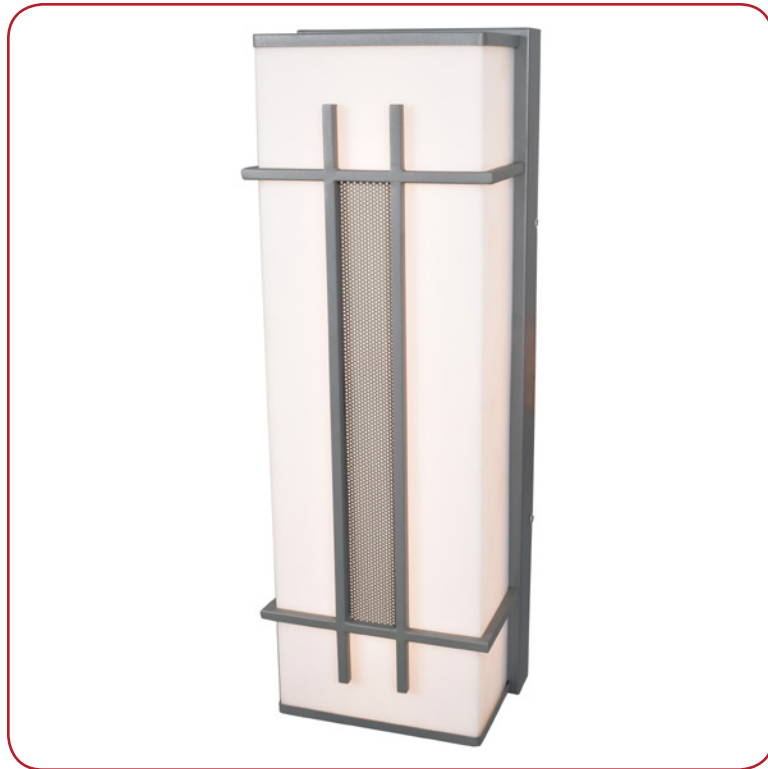


Model No :: **20101LEDDMG-SAT/ACR**  
 Name :: Tuxedo



Project Name :: \_\_\_\_\_  
 Location :: \_\_\_\_\_  
 Type :: \_\_\_\_\_  
 Quantity :: \_\_\_\_\_  
 Notes :: \_\_\_\_\_

**Product Information**

Product ID :: 20101  
 UPC Code :: 641594223620  
 Mounting Type :: Wall  
 Finish :: Satin (SAT)  
 Diffuser :: Acrylic Lens (ACR)  
 Alt. Finishes :: Bronze (BRZ); Satin (SAT)  
 Alt. Diffusers :: Acrylic Lens (ACR)

**Product Dimensions**

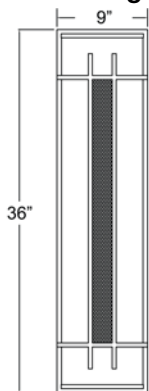
Fixture	Canopy
Length :: N/A	Length :: N/A
Width :: 9"	Width :: 9"
Diameter :: N/A	Diameter :: N/A
Extension :: 5.5"	Height :: 36"
Height :: 36"	
Overall Height :: N/A	



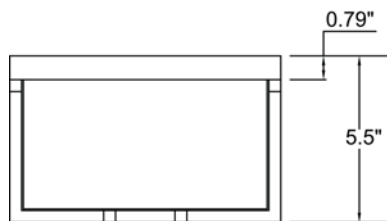
**Technical Specifications**

Qualifications	Specifications	Photometrics	Recommended Dimmers
Location Rating :: Wet	Frame Material :: Metal	CCT :: 3000	(ELV) LUTRON Caseta PD
Certification :: ETL Listed (US/Canada)	Diffuser Material :: Acrylic	CRI :: 90	- 6WCL; (ELV) LUTRON
IES File ::	Voltage :: 120v	Wattage :: 30w	Maestro CL MACL-153M;
JA8 Compliant :: No	Lamping Type :: Dedicated	Nominal	(ELV) LUTRON Skylark Contour
Energy Star :: No	Lamping Base :: SSL	Lumens :: 3326Lm	CTCL-153P; (TRIAC) LEVITON
ADA Compliant :: No	Lamp Quantity :: 1	Delivered	Decora Sureslide 6674; (TRIAC)
Marine Grade :: Yes	Lamp Wattage :: 30 W	Lumens :: N/A	LUTRON Diva DVCL-153P
Emergency Lighting :: No	Total Wattage :: 30w	Additional Items :: 0	
Warranty :: 5 Year Limited	Lamps Included :: Yes		
	J-Box Type :: Standard		

Line Drawing #1



Line Drawing #2



IES File

Image  
Not Available

Toll Free 800-828-5483 • [www.AccessLighting.com](http://www.AccessLighting.com)

14410 Myford Road, Irvine, CA 92606

The information provided is subject to change without notice. ©2020 Access Lighting Corporation. All Rights Reserved  
 Rev. 202004 Filename:: 20101LEDDMG-SAT\_ACR.pdf

