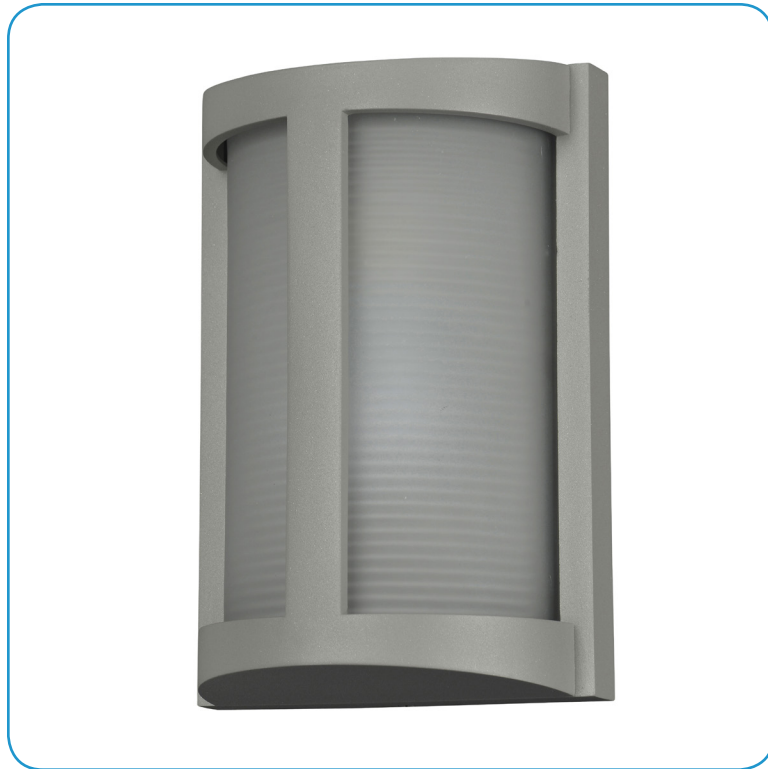


Model No :: **20042MG-SAT/RFR**  
 Name :: Pier



Project Name :: \_\_\_\_\_  
 Location :: \_\_\_\_\_  
 Type :: \_\_\_\_\_  
 Quantity :: \_\_\_\_\_  
 Notes :: \_\_\_\_\_

**Product Information**

Product ID :: 20042  
 UPC Code :: 641594206760  
 Mounting Type :: Wall  
 Finish :: Satin (SAT)  
 Diffuser :: Ribbed Frosted (RFR)  
 Alt. Finishes :: Black (BL); Bronze (BRZ)  
 Alt. Diffusers :: N/A

**Product Dimensions**

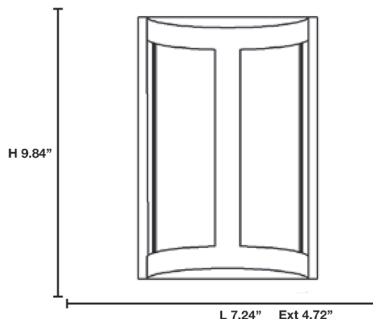
<b>Fixture</b>		<b>Canopy</b>	
Length ::	N/A	Length ::	N/A
Width ::	7.24	Width ::	N/A
Diameter ::	N/A	Diameter ::	N/A
Extension ::	4.72	Height ::	N/A
Height ::	10.23		
Overall Height ::	N/A Max.		



**Technical Specifications**

Qualifications	Specifications	Photometrics	Recommended Dimmers
Location Rating :: Wet	Frame Material :: Aluminum	CCT :: 2700	(TRIAC) Any Standard Dimmer
Certification :: cULus	Diffuser Material :: Glass	CRI :: N/A	
IES File :: No	Voltage :: 120v	Wattage :: 60 W	
JA8 Compliant :: No	Lamping Type :: Incandescent	Nominal Lumens :: 800	
Energy Star :: No	Lamping Base :: E-26	Delivered Lumens :: N/A	
ADA Compliant :: No	Lamp Quantity :: 1		
Marine Grade :: Yes	Lamp Wattage :: 60 W		
Emergency Lighting :: No	Total Wattage :: 60 W		
Warranty :: 1 Year Limited	Lamps Included :: No		
	J-Box Type :: Standard		
<b>Custom Options :: N/A; Additional Items :: N/A</b>			

**Line Drawing #1**



**Line Drawing #2**

Image Not Available

**IES File**

Image Not Available

**Toll Free 800-828-5483 or www.AccessLighting.com**

14410 Myford Road, Irvine, CA 92606  
 The information provided is subject to change without notice. ©2018 Access Lighting Corporation. All Rights Reserved  
 Rev. 201809 Filename: 20042MG-SAT\_RFR.pdf

