

LED DOWNLIGHT INSTALLATION INSTRUCTIONS



Read the instruction sheet and all product labels before installing fixture. This product must be installed in full accordance with applicable electrical and building codes by a person familiar with the construction and operation of this fixture and all involved hazards. Installation should be performed by a qualified electrician in accordance with the National Electrical Code and relevant local codes.

TO PREVENT ELECTRICAL SHOCK, POWER SHOULD BE TURNED OFF AT THE FUSE BOX BEFORE INSTALLATION.

SAFETY WARNINGS:

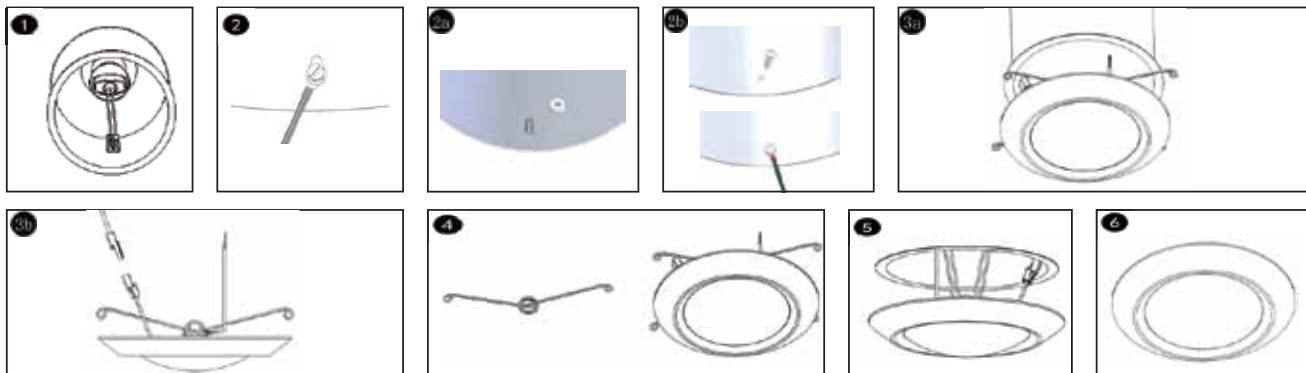
Read all product labels and directions.

- WARNING - Risk of fire or electric shock. LED Retrofit Kit installation requires knowledge of luminaires electrical systems. If not qualified, do not attempt installation. Contact a qualified electrician.
- WARNING - Risk of fire or electric shock. Install this kit only in the luminaires that have the construction features and dimensions shown in the photographs and/or drawings.
- Installation should be performed only by a qualified electrician in accordance with the National Electrical Code and relevant local codes.
- Do not make or alter any open holes in an enclosure or electrical components during kit installation.
- WARNING - To prevent wiring damage or abrasion, do not expose wiring to edges of sheet metal or other sharp objects.
- Lamp replacement instructions shall indicate the manufacturer's custom lamp part number, and a method to order replacement lamps by phone, website and/or mail.
- The recessed luminaire is intended for mounting only in a covered ceiling (where only the led side of the luminaire will be exposed to damp or dry locations).
- **INSTALLATION SHOULD ONLY BE PERFORMED AFTER POWER TO THE FIXTURE HAS BEEN DISCONNECTED.**
- These instructions shall be included on an information sheet packaged with each unit.

INSTALLATION INSTRUCTIONS:

6 inch can ("MIN. LAMP COMPARTMENT DIMENSIONS 154(DIA) X 188(H) mm" for 6 inch.)

1. Reach inside the existing can, and screw the supplied connector into the socket within the can.
2. There are 2 options in attaching the green ground wire to the 6 inch can. The ground wire needs to be positioned under the nut. Please select one of the followings:
 - 2.a. Use the existing screw inside the housing and just tighten.
 - 2.b. Put the provided #8 screw into the existing hole. Tighten.
- 3.a. Make sure to support the fixture.
- 3.b. Connect the orange male to the female connector.
4. The springs that are attached to the fixture can be squeezed to be inserted into the can. You can do this one by one, if that is easier. Make sure to hook them on the inside of the can tabs. For cans that require a housing adaptor please follow manufacturer's installation guide, then proceed with step 5.
5. After the springs are attached, push the disk fixture up into the can, which is already attached by the springs.
6. Make sure the disk sits flush against the surface.



Installation into (Halo) non-screw base recessed

· Start installation from Step 2.

Replacing LED Module

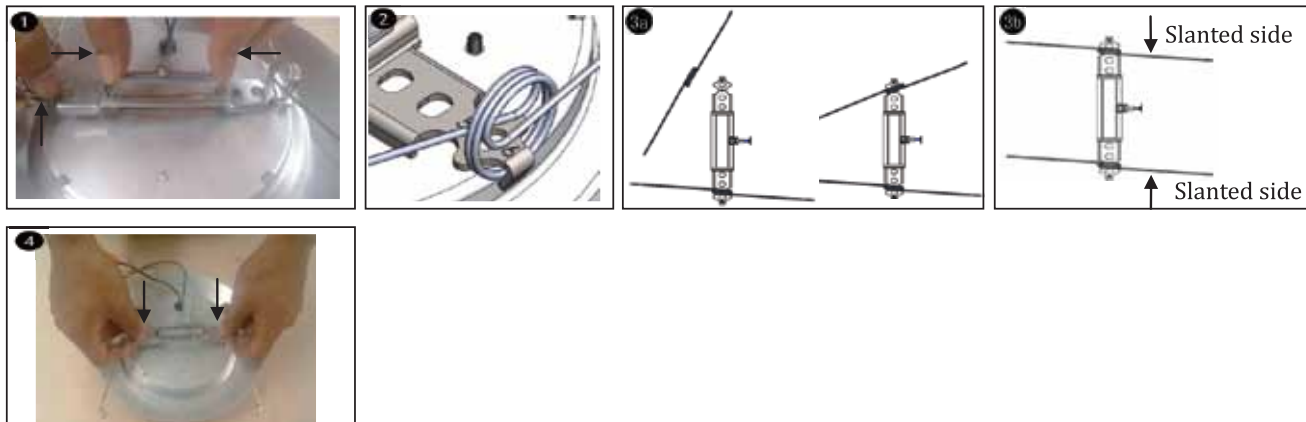
1. Make certain power to can is turned off.
2. Pull down on trim with finger tips.
3. Squeeze springs to remove module from can.
4. Disconnect LED orange connector.

Title 24 Installation

For Title 24 installation please proceed with Step 2 of 6" Can installation.

5 inch can ("MIN. LAMP COMPARTMENT DIMENSIONS 128(DIA) X 188(H) mm" for 5 inch.)

1. Press the two clips towards the center, and make sure it is loosened enough to remove the bracket from the clips.
2. Pull the springs off of the tab marked "6."
- 3.a. Place the springs onto the tab marked "5."
- 3.b. Make sure the angled (slanted) side of the springs faces toward the power supply.
4. Hold the springs by hands, then press the bracket into the clips.
5. Once this adjustment is completed, it is time to start the installation into the can. Refer to the 6 inch can directions starting with step 1.



LED DOWNLIGHT INSTALLATION INSTRUCTIONS

J-box

Min Volume: 18 in³, min Length: 3.25 in, Height: 2.20 in

1. Before installation, cut the wires close to the lamp holder part, leaving at least 9" of wire from the terminal part.

2. On the j-box, you will need to make 2 pigtail connections. The black j-box wire, which is the hot wire, should be connected to the black pigtail wire of the enclosed installation harness. The white j-box wire, which is the neutral wire, should be connected to the white pigtail wire.

3. Press the two clips towards the center, and make sure it is loosened enough to remove the bracket from the clips.

4. Pull the springs off of the tab marked "6". Discard the springs.

5. Fasten the bracket to the j-box using the 1 1/2" or 3/4" 8-32. If necessary, use a drill to screw in tighter. Note that the #6 pointed screws can be used as a replacement for the bracket screws to help dig into surfaces harder than sheetrock such as wood.

6. It is time to make the connections. The green ground wire that is exposed and attached to the fixture should be cut at the end that is the free floating ring terminal and the insulation stripped 1/2" back. The uninsulated j-box wires are ground wires and will need to be connected to the green ground wire. Wire nuts should be used to make the connections. Next, make the connection between male and female black connectors. Finally make the connection between the male and female orange connectors. Carefully push all of the connections into the j-box, (NOTE: IF POWER TO FIXTURE IS TURNED ON BEFORE CONNECTION OF MALE AND FEMALE BLACK CONNECTORS IS MADE THEN POWER SUPPLY WILL GO INTO SELF PROTECT MODE FOR 5 MINUTES. MAKE SURE POWER TO FIXTURE IS OFF AND TRY AGAIN AFTER 5 MINUTES.)

7. Push the disk fixture up into the J-box, and make sure the bracket is installed well with the clips.

8. Make sure the disk sits flush against the surface.

